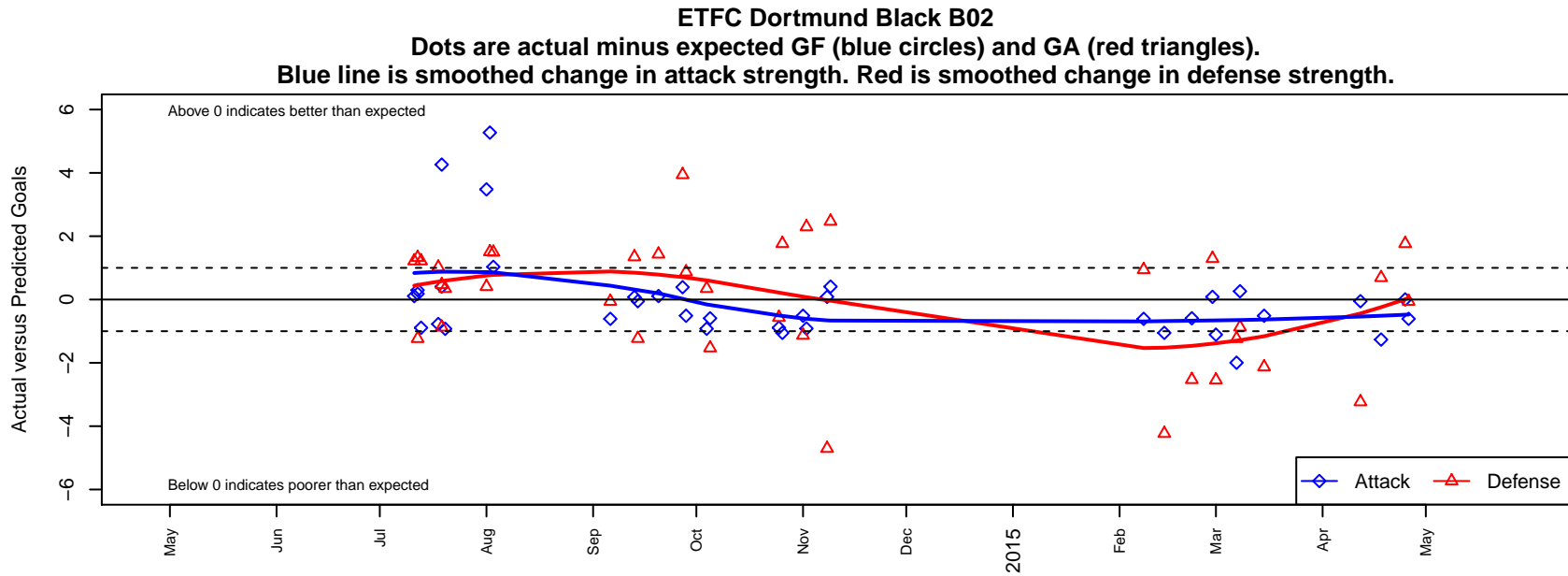


ETFC Dortmund Black B02

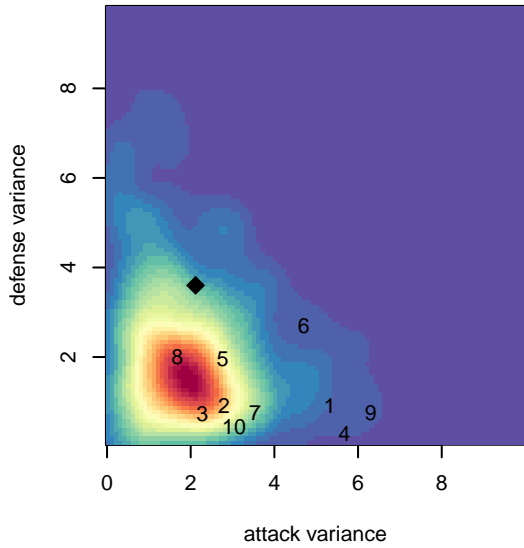
Eugene Timbers FC
 Eugene, OR
 B02 total strength=698
 attack=1.01 defense=0.49
 fall league = PTT B02 Premier
 spr league = Spr OYS B02 Premier
 notes= was EMFC; was blue

alt names used:
 ETFC 02 Dortmund Black
 ETFC 02 Dortmund Black
 EUGENE TIMBERS FC ETFC 02 DORTMUND
 ETFC 02 Dortmund Black
 ETFC 02 Dortmund Black

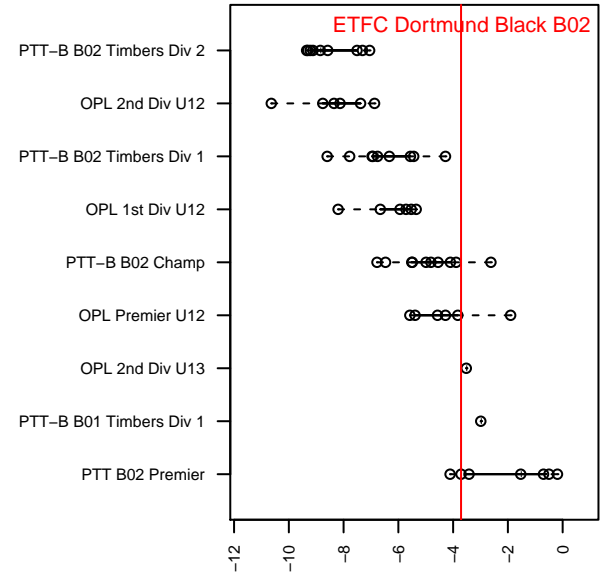
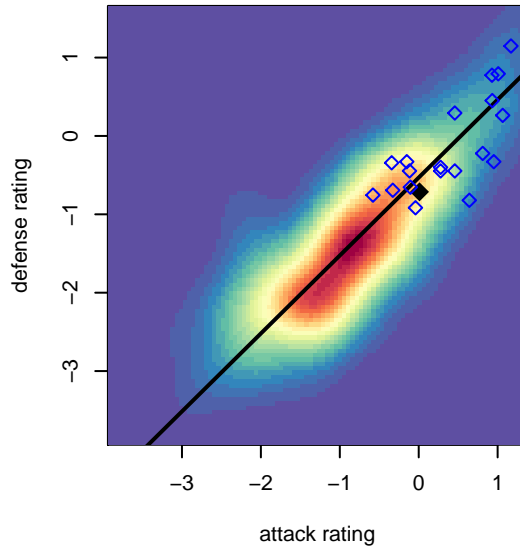
Venues played:
 2014 Adidas Cup BU12-13
 2014 Beaverton Cup BU12 Gold
 2014 Bend Premier Cup U12B GOLD U12
 2014 PTT B02 Premier
 2014 Spr OYS B02 Premier
 2014 OYS State Cup B02



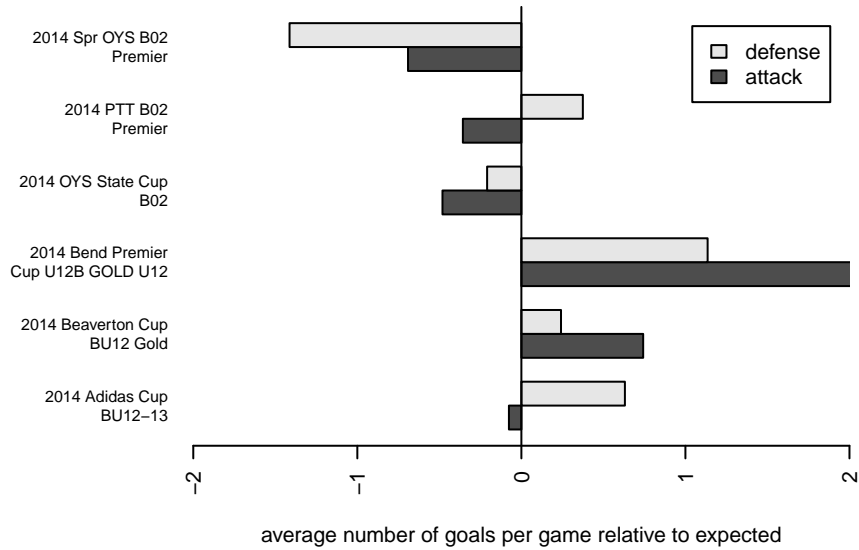
**attack and defense variance (black dot)
relative to other teams
and top 10 in region**



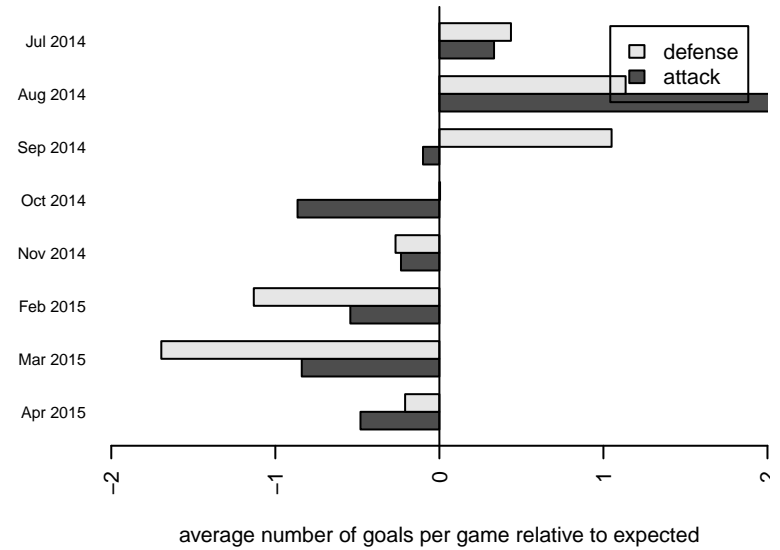
**attack and defense rating
relative to others at age
and all opponents in last 13 months**



Performance relative to 13 month average



Performance relative to 13 month average



| date | home | | away | | venue | pred.home | pred.away |
|------------|--------------------------------|----|--------------------------------|---|-------------------------------------|-----------|-----------|
| 2015-04-26 | Capital FC Timbers Red B02 | 5 | ETFC Dortmund Black B02 | 0 | 2014 OYS State Cup B02 | 4.94 | 0.61 |
| 2015-04-25 | ETFC Dortmund Black B02 | 2 | Westside Timbers Samba B02 | 0 | 2014 OYS State Cup B02 | 2.00 | 1.77 |
| 2015-04-18 | ETFC Dortmund Black B02 | 0 | Eastside Timbers Black B02 | 2 | 2014 OYS State Cup B02 | 1.26 | 2.69 |
| 2015-04-12 | NEU Barca White B02 | 8 | ETFC Dortmund Black B02 | 1 | 2014 OYS State Cup B02 | 4.77 | 1.05 |
| 2015-03-15 | ETFC Dortmund Black B02 | 0 | Eastside Timbers Red B02 | 8 | 2014 Spr OYS B02 Premier | 0.51 | 5.87 |
| 2015-03-08 | PCU Red B02 | 2 | ETFC Dortmund Black B02 | 3 | 2014 Spr OYS B02 Premier | 1.13 | 2.74 |
| 2015-03-07 | Westside Timbers Samba B02 | 3 | ETFC Dortmund Black B02 | 0 | 2014 Spr OYS B02 Premier | 1.77 | 2.00 |
| 2015-03-01 | ETFC Dortmund Black B02 | 2 | Academia Leon B02 | 4 | 2014 Spr OYS B02 Premier | 3.11 | 1.46 |
| 2015-02-28 | Washington Timbers Red B02 | 4 | ETFC Dortmund Black B02 | 1 | 2014 Spr OYS B02 Premier | 5.30 | 0.92 |
| 2015-02-22 | ETFC Dortmund Black B02 | 0 | Westside Timbers Copa B02 | 8 | 2014 Spr OYS B02 Premier | 0.59 | 5.47 |
| 2015-02-14 | NEU Barca White B02 | 9 | ETFC Dortmund Black B02 | 0 | 2014 Spr OYS B02 Premier | 4.77 | 1.05 |
| 2015-02-08 | ETFC Dortmund Black B02 | 0 | Capital FC Timbers Red B02 | 4 | 2014 Spr OYS B02 Premier | 0.61 | 4.94 |
| 2014-11-09 | ETFC Dortmund Black B02 | 1 | Westside Timbers Copa B02 | 3 | 2014 PTT B02 Premier | 0.59 | 5.47 |
| 2014-11-08 | Washington Timbers Red B02 | 10 | ETFC Dortmund Black B02 | 1 | 2014 PTT B02 Premier | 5.30 | 0.92 |
| 2014-11-02 | ETFC Dortmund Black B02 | 0 | Washington Timbers Red B02 | 3 | 2014 PTT B02 Premier | 0.92 | 5.30 |
| 2014-11-01 | Eastside Timbers Red B02 | 7 | ETFC Dortmund Black B02 | 0 | 2014 PTT B02 Premier | 5.87 | 0.51 |
| 2014-10-26 | NEU Barca White B02 | 3 | ETFC Dortmund Black B02 | 0 | 2014 PTT B02 Premier | 4.77 | 1.05 |
| 2014-10-25 | ETFC Dortmund Black B02 | 1 | BSC Portland Black-Legends B02 | 2 | 2014 PTT B02 Premier | 1.89 | 1.43 |
| 2014-10-05 | Westside Timbers Copa B02 | 7 | ETFC Dortmund Black B02 | 0 | 2014 PTT B02 Premier | 5.47 | 0.59 |
| 2014-10-04 | W AFC Real Madrid B02 | 2 | ETFC Dortmund Black B02 | 1 | 2014 PTT B02 Premier | 2.35 | 1.92 |
| 2014-09-28 | ETFC Dortmund Black B02 | 0 | Eastside Timbers Red B02 | 5 | 2014 PTT B02 Premier | 0.51 | 5.87 |
| 2014-09-27 | ETFC Dortmund Black B02 | 1 | Capital FC Timbers Red B02 | 1 | 2014 PTT B02 Premier | 0.61 | 4.94 |
| 2014-09-20 | BSC Portland Black-Legends B02 | 0 | ETFC Dortmund Black B02 | 2 | 2014 PTT B02 Premier | 1.43 | 1.89 |
| 2014-09-14 | ETFC Dortmund Black B02 | 1 | NEU Barca White B02 | 6 | 2014 PTT B02 Premier | 1.05 | 4.77 |
| 2014-09-13 | ETFC Dortmund Black B02 | 2 | W AFC Real Madrid B02 | 1 | 2014 PTT B02 Premier | 1.92 | 2.35 |
| 2014-09-06 | Capital FC Timbers Red B02 | 5 | ETFC Dortmund Black B02 | 0 | 2014 PTT B02 Premier | 4.94 | 0.61 |
| 2014-08-03 | ETFC Dortmund Black B02 | 3 | LASC Eagles B02 | 1 | 2014 Bend Premier Cup U12B GOLD U12 | 1.97 | 2.49 |
| 2014-08-02 | ETFC Dortmund Black B02 | 8 | THUSC Beryllium Black B02 | 0 | 2014 Bend Premier Cup U12B GOLD U12 | 2.73 | 1.51 |

| date | home | | away | | venue | pred.home | pred.away |
|-------------|------------------------------|---|---------------------------|---|-------------------------------------|------------------|------------------|
| 2014-08-01 | Westside Timbers Copa TS B02 | 1 | ETFC Dortmund Black B02 | 6 | 2014 Bend Premier Cup U12B GOLD U12 | 1.41 | 2.52 |
| 2014-07-20 | ASA B03 | 1 | ETFC Dortmund Black B02 | 1 | 2014 Beaverton Cup BU12 Gold | 1.35 | 1.93 |
| 2014-07-19 | PCU Red B02 | 2 | ETFC Dortmund Black B02 | 7 | 2014 Beaverton Cup BU12 Gold | 1.13 | 2.74 |
| 2014-07-19 | ETFC Dortmund Black B02 | 1 | Westside Timbers Copa B02 | 5 | 2014 Beaverton Cup BU12 Gold | 0.59 | 5.47 |
| 2014-07-18 | ETFC Dortmund Black B02 | 1 | FC Elk Grove 03 Navy B02 | 4 | 2014 Beaverton Cup BU12 Gold | 1.77 | 5.02 |
| 2014-07-13 | ETFC Dortmund Black B02 | 1 | Albany FC Heat B01 | 2 | 2014 Adidas Cup BU12-13 | 1.89 | 3.22 |
| 2014-07-12 | Table Rock SC Thunder B01 | 5 | ETFC Dortmund Black B02 | 3 | 2014 Adidas Cup BU12-13 | 3.77 | 2.82 |
| 2014-07-12 | ETFC Valencia Black B01 | 3 | ETFC Dortmund Black B02 | 2 | 2014 Adidas Cup BU12-13 | 4.33 | 1.70 |
| 2014-07-11 | ETFC Dortmund Black B02 | 2 | Albany FC Heat B01 | 2 | 2014 Adidas Cup BU12-13 | 1.89 | 3.22 |